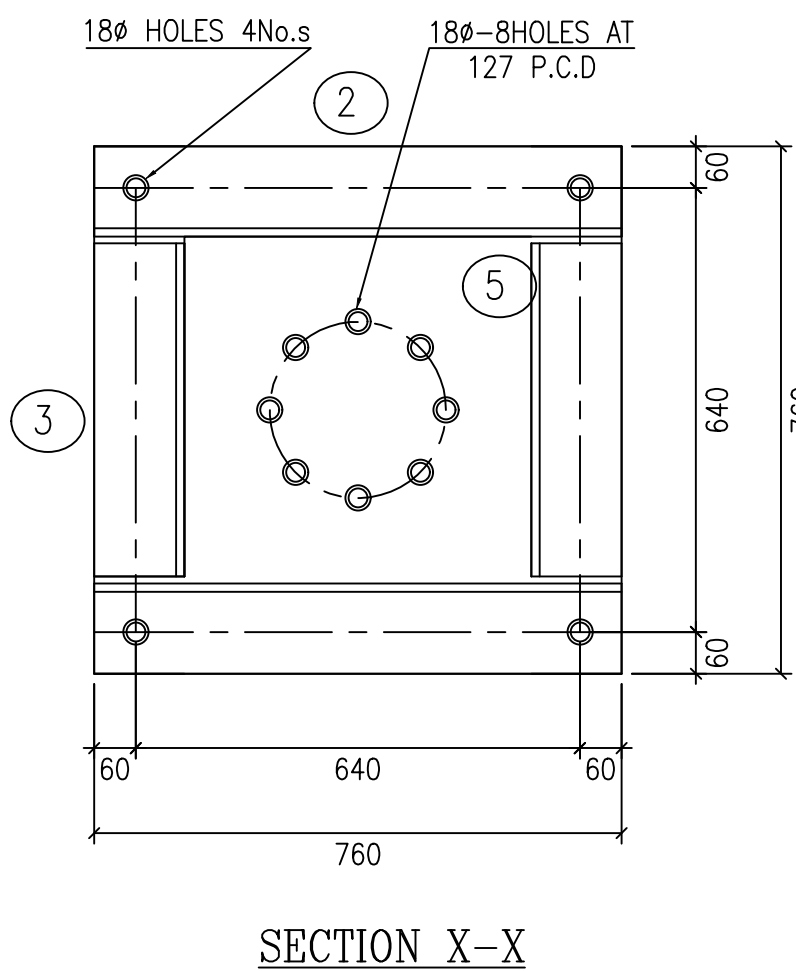
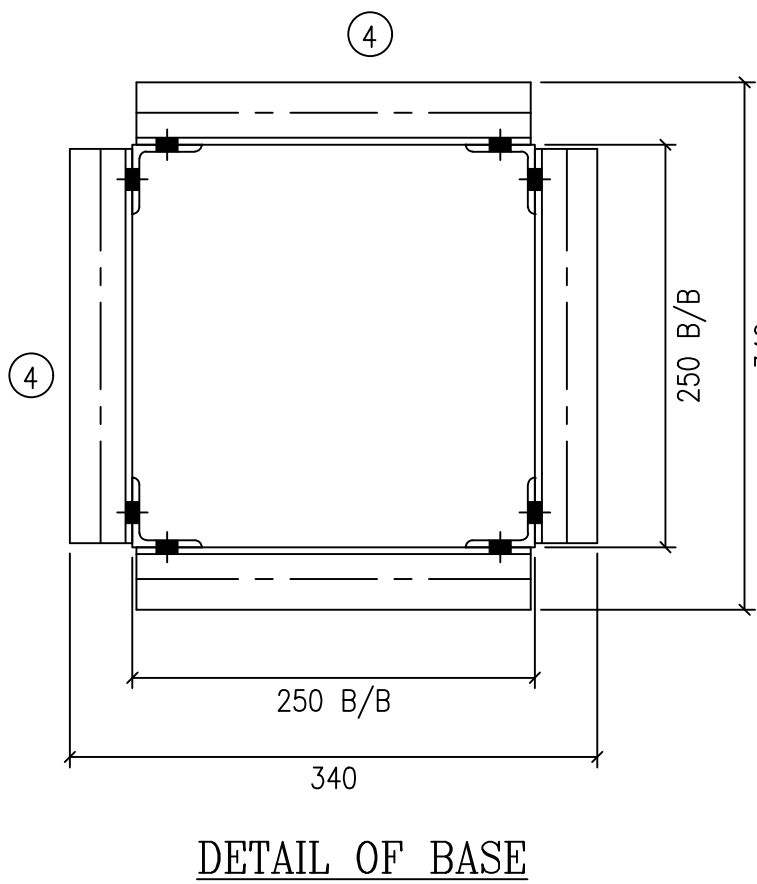



BILL OF MATERIAL				
ITEM NO.	SECTION DESCRIPTION	QTY	Unit Wt.	WEIGHT
RPI-1	ISA-50X50X6-4468 mm	2	4.50	40.21
RPI-1X	ISA-50X50X6-4468 mm	2	4.50	40.21
RPI-2	ISA-65X65X6-380 mm	2	5.80	4.40
RPI-3	ISA-65X65X6-244 mm	2	5.80	2.83
RPI-4	ISA-45X45X5-244 mm	36	3.40	29.86
RPI-5	PLT-380X380X8 mm	1	9.06	9.06
TOTAL WEIGHT IN KGS.				126.60



LIST OF BOLTS & NUTS			
DESCRIPTION OF BOLT	QTY	Unit Wt.	Wt.
M16 BOLT X 35 mm LG	85	0.124	10.54
M16 BOLT X 40 mm LG	12	0.132	1.584
3.5 TH.SP.WASHER FOR 16Ø BOLT	97	0.009	0.873
TOTAL WEIGHT		13.00	

- NOTES:
1. ALL DIMENSIONS ARE IN MM.
  2. ALL HOLES ARE 17.5MM DIA. FOR 16MM DIA. BOLTS.
  3. ALL STEEL SECTIONS SHALL CONFORM TO IS: 2062.
  4. ALL STEEL SECTIONS, BOLTS, NUTS & PACK WASHERS ARE TO BE HOT DIP GALVANIZED.
  5. ALL BOLTS SHALL CONFORM TO IS:12427(2001), WITH MECHANICAL PROPERTIES CLASS 5.6 AND NUTS SHALL CONFORM TO IS: 1367(PART-VI) OF PROPERTIES CLASS-5.
  6. DIMENSIONAL AND WEIGHT TOLERANCE  $\pm 10\%$ .
  7. THE HEIGHT OF STRUCTURE SHALL BE ADJUSTED TO MATCH WITH LIVE POINT HEIGHT (LPH) AS PER APPROVED SECTIONAL DRAWING.
  8. THE EQUIPMENT MOUNTING DETAILS SHALL BE MATCHED WITH APPROVED EQUIPMENT DRAWINGS.

Approval Ltr No.: CEE/P&C/SET/EE(TL)/AEE-9/2021-22/10039-49 Dtd:05.10.2021

						KPTCL/P&C/TECH/66KV/PI										EQUIPMENT MOUNTING STRUCTURE FOR 66KV PI (FOR 66/11KV SUBSTATIONS ONLY)			
									AEE		EE		SEE		CEE				
REV No	REVISION DETAILS					DRAWING NO.			DRAWN/CHECKED		SUBMITTED		RECEIVED		APPROVED				
1		2			3								6			7		8	